



Chicago Rarities Orchard Project

Logan Square Plaza

Chicago Rarities Orchard Project
crop@chicagorarities.org
chicagorarities.org

The Chicago Rarities Orchard Project is an incorporated 501c3 non-profit with the mission to develop orchards in Chicago dedicated to preserving and popularizing endangered and antique fruits while educating the community on their importance. To the best of our knowledge, this idea – a community based, urban orchard, dedicated to rare, and endangered varieties of fruits – is unique to the world.

Currently, we are trying to develop our first orchard in Logan Square at the corner of Logan and Milwaukee. We hope to offer the neighborhood beautiful open space, educational opportunities and access to locally produced fruit

We are continually interested in talking to neighbors, gardeners, and interested Chicagoans about this project. Please don't hesitate to contact us with any questions or ideas.

Yours,

A handwritten signature in black ink, appearing to read "Dave Snyder". The signature is fluid and cursive, with a long horizontal line extending from the end.

Dave Snyder
Founder, Chicago Rarities Orchard Project

Logan and Milwaukee

CROP has been in discussions with NeighborSpace and the Department of Zoning and Land Use to develop our first orchard at an empty lot on the corner of Logan and Milwaukee.

Part of the 2004 Logan Square Open Space Plan, these lots were earmarked to be “a plaza and serve as a farmer’s market location catering to transit users and local residents.” However, the successful Logan Square Farmer’s Market has outgrown this space and CROP is perfectly positioned to steward this space, with the help of NeighborSpace.

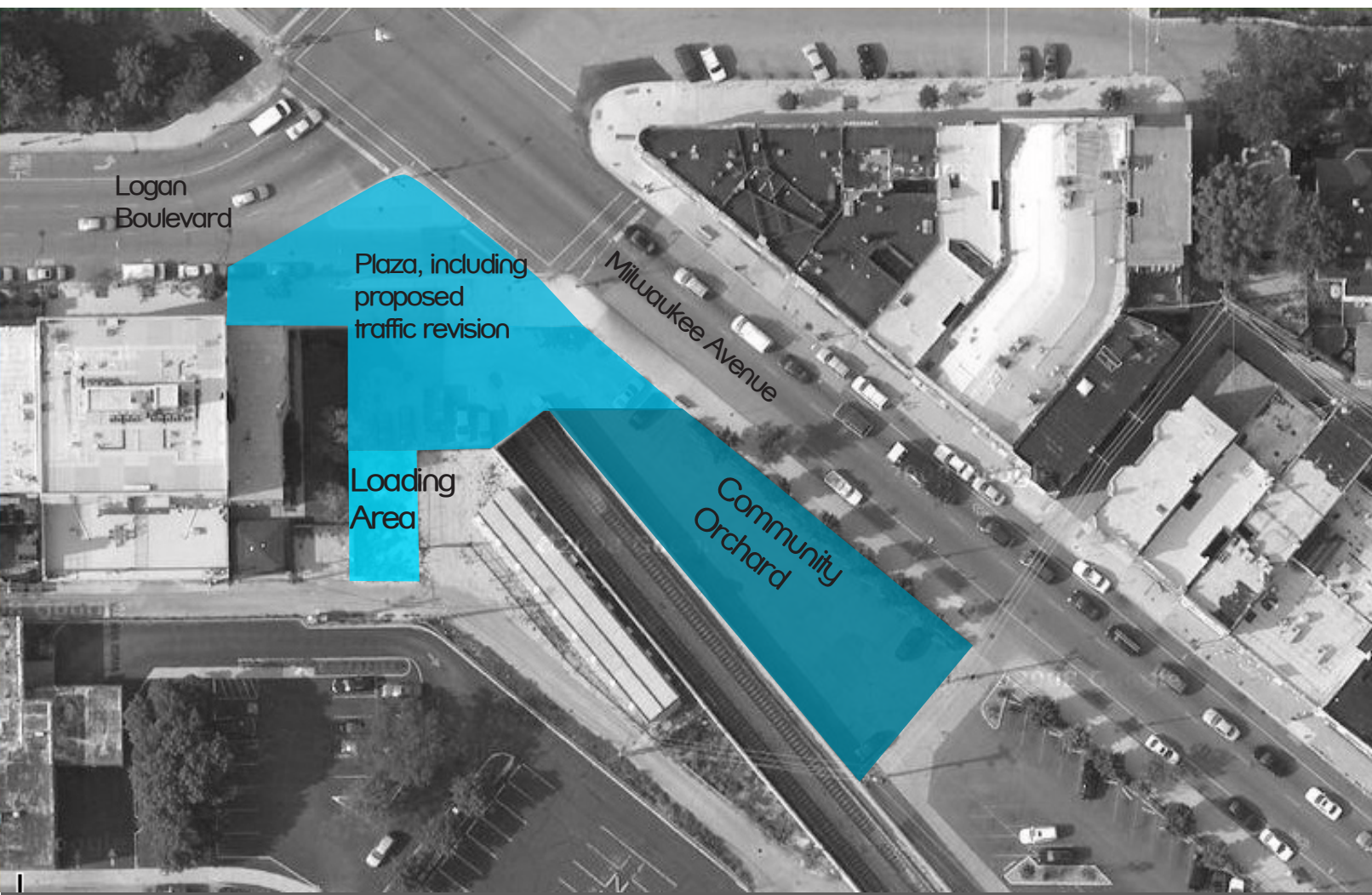
The CROP design preserves the following features of the original project:

- Publicly accessible open space
- Neighborhood beautification
- Enhances community participation in the space with regular activities
- Maintains possibility for partnership with farmers market

This design also offers some new benefits in addition to the original concept:

- Stewardship from a community partner
- Hands-on educational opportunities
- Local and national attention as an innovative environmental organization
- Opportunities for cultural programming
- Local food production

Site Location at Logan Boulevard and Milwaukee Avenue



To combine open space with growing space, we've developed a site plan that balances accessibility, careful management, and beautiful garden design. An open landscaped plaza along Logan Boulevard activates the intersection of Logan and Milwaukee. Continuing along Milwaukee, a community managed orchard will be open to the public during volunteer hours throughout the week, through public special events, and programmed in coordination with the Farmer's Market.

Plaza

- Provides passive, accessible open space
- Opportunities for cultural programming

Community Orchard

- Provides managed open space
- Highly visible
- Produces local fruit
- Educational programming
- Opportunities for partnership with farmer's market and local restaurants

Logan Square

By locating our project in Logan Square, CROP aims to serve the neighborhood directly. Indeed, we already have roots in the neighborhood. Most of our volunteer staff lives in Logan Square. We've received enthusiastic support from neighbors and neighboring businesses.

We will work with the Logan Square Chamber of Commerce, Logan Square Neighborhood Association, Logan Square Farmer's Market, and work directly with neighborhood schools, businesses, and organizations to get our apples into the hands of our neighbors.

About CROP

Although Logan Square will be our first site, CROP has already developed their organization with long-term sustainability in mind. We have raised our budget for 2010 of \$3,000 and have secured long-term funding through Uncommon Ground. We have 60 trees planted (currently stored at the Chicago Honey Coop) representing 35 varieties, which will comprise the initial group of trees for the lot. We have also developed relationships with several local organizations with interest in urban agriculture and civic open space.

A Historic Note

From its first settlement on, Logan Square was farm land. Early farmers transported their produce the five miles to Chicago via the newly completed "Plank Road" which would become the modern-day Milwaukee Avenue.

You can see from the map below of Logan Square in 1881, that trees were integral to the area. A cherry orchard owned by George Powell's son, produced 600 bushels in 1871.



Image of map taken from logansquarepreservation.org

Establishing an orchard in Logan Square will create a symbolic link to the agricultural history of this dense, modern neighborhood.